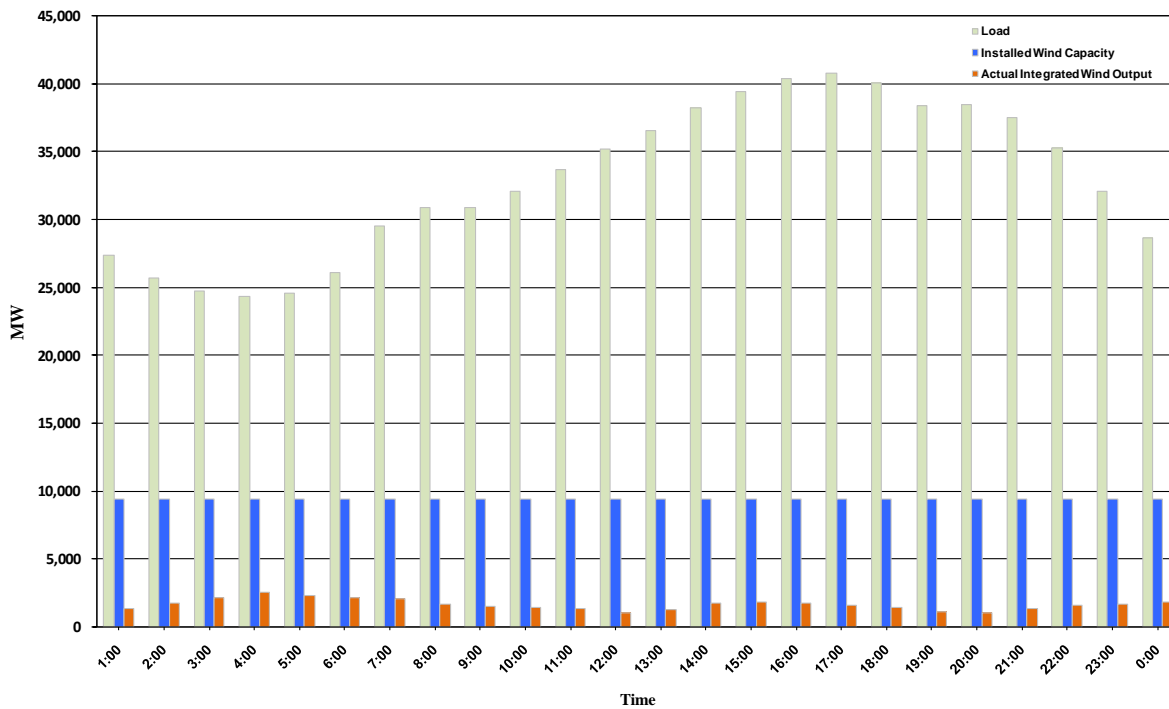




## ERCOT Grid Operations Wind Integration Report: 10/13/10

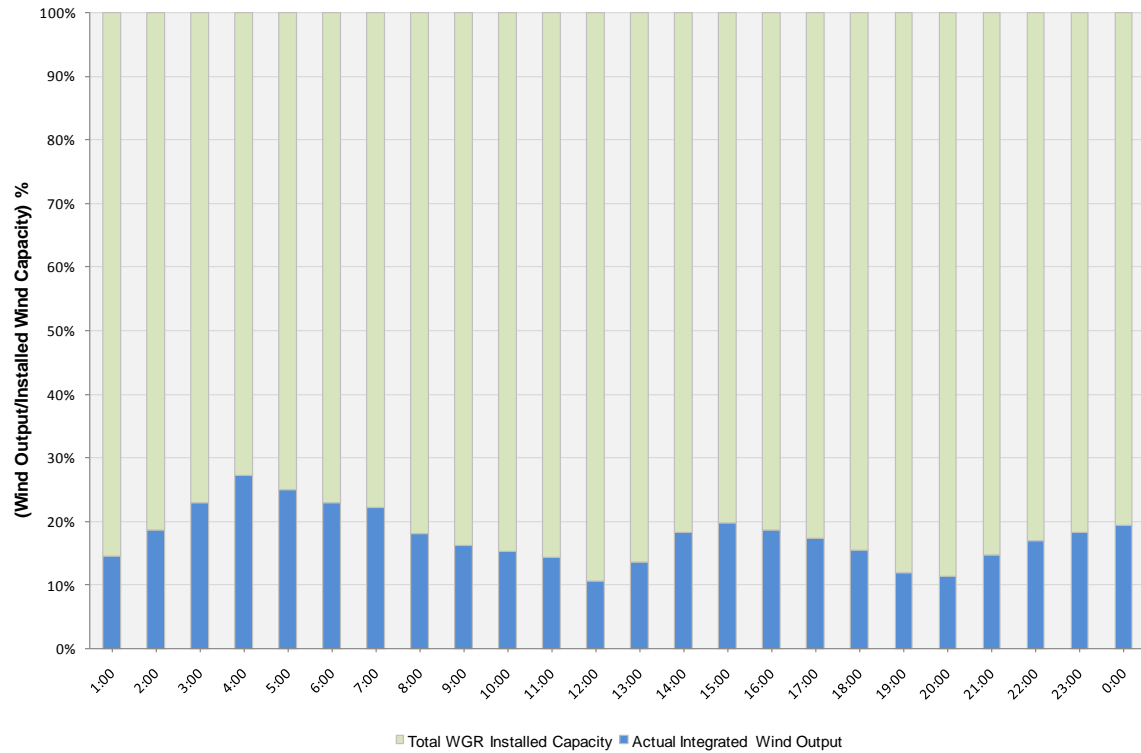
Peak Load	<b>40,820 MW</b>
Load Peak Hour	<b>17</b>
Wind Record 06/12/10	<b>7016 MW</b>
Max Wind value	<b>2657 MW</b>
Wind Peak Hour	<b>03:13:32</b>
Wind Integration %	<b>10.86</b>

Hourly Average Actual Load vs. Actual Wind Output  
10-13-2010

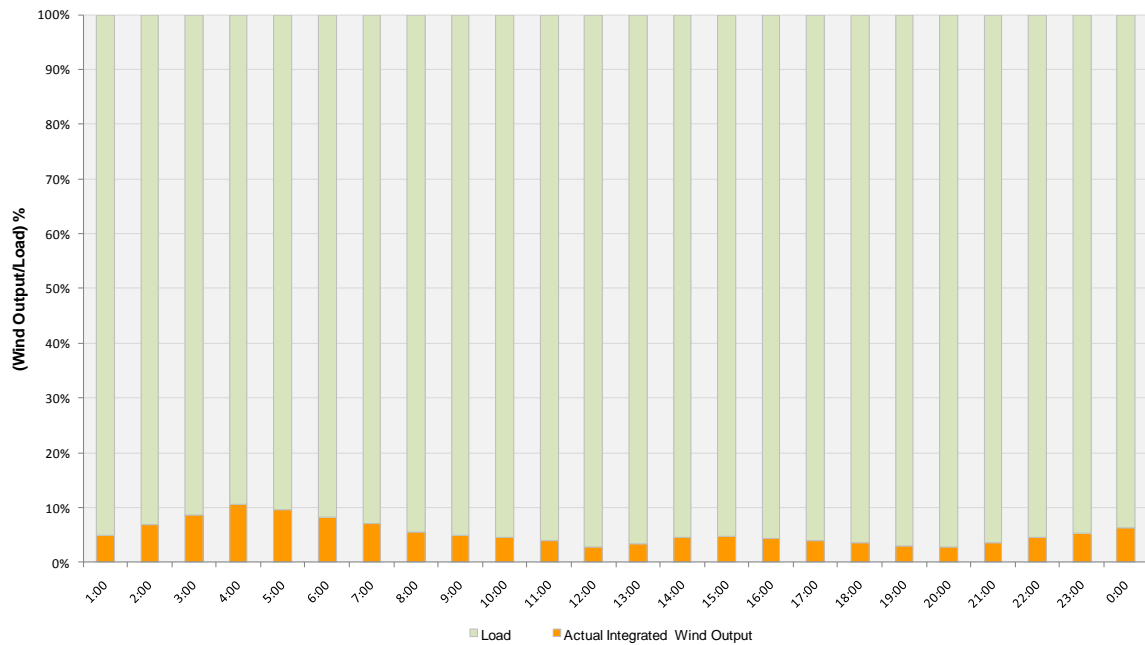




**Actual Wind Output as a Percentage of the Total Installed Wind Capacity**  
**10-13-2010**



**Actual Wind Output as a Percentage of the ERCOT Load**  
**10-13-2010**





**ERCOT Load vs. Actual Wind Output 10/06/10 - 10/13/10**

